

8 7 6 5 4 3 2 1

ITEM NO.	PART NUMBER	DESCRIPTION	QTY
1	366-070	HBS Back Half Housing	1
2	366-075	HBS Left Front Brake, Front Housing	1
3	366-052	HBS Caliper Brake Pads	2
4	366-060	HBS LF Brake Piston	2
5	366-058	HBS Caliper Bleeder	1
6	41-981603	1/8" NPT to 3AN Straight Fitting	1
7	366-057	HBS Caliper Body O-Ring	1
8	366-055	HBS Caliper Hair Pin Clip	1
9	366-056	HBS Brake Square O-Ring	2
10	366-054	3/16 Clevis Pin	1
11	972-05-18-1.25	5/16-18 x 1.25" Long SHCS	2

D

D

C

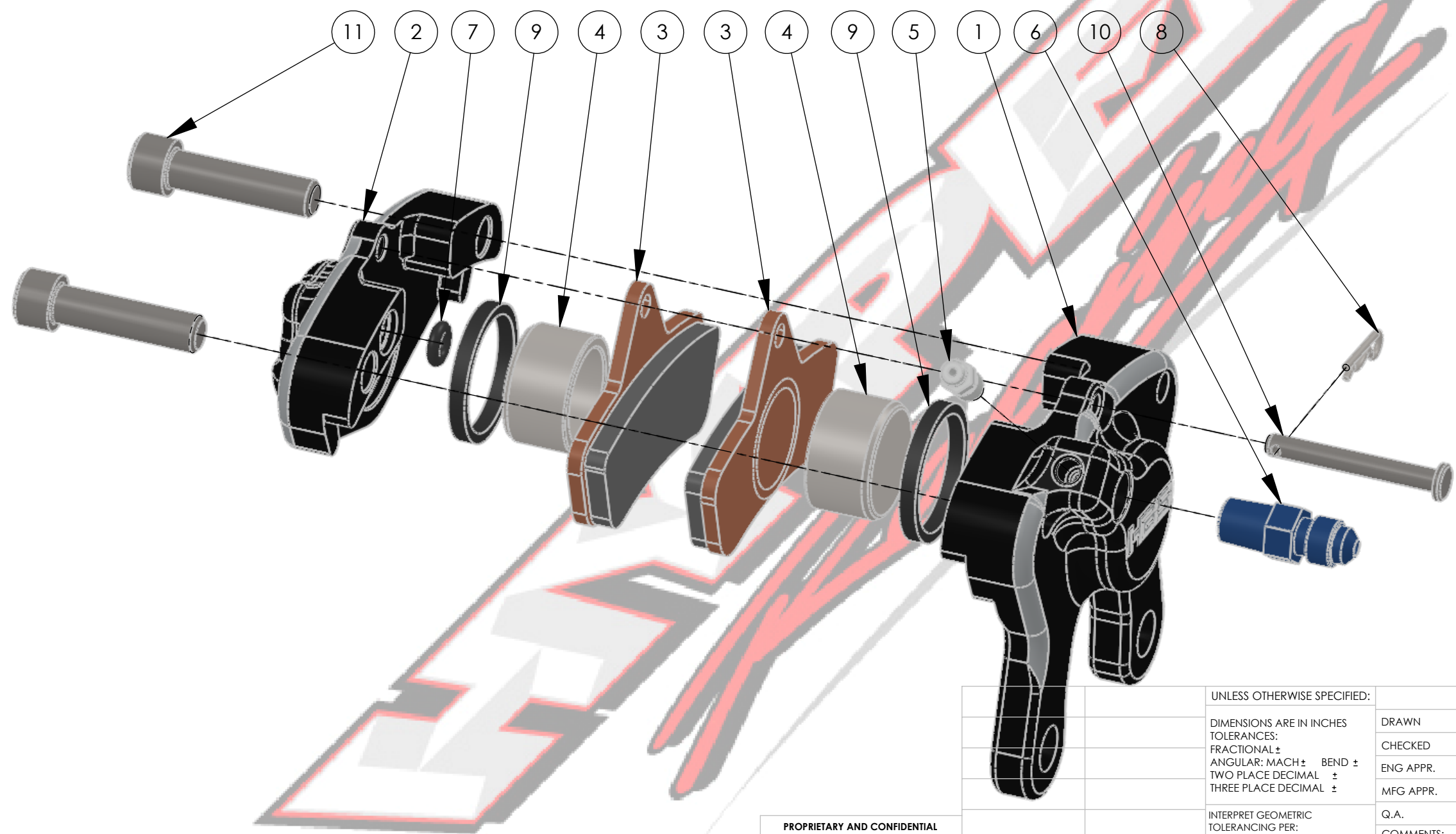
C

B

B

A

A



**PROPRIETARY AND CONFIDENTIAL**  
 THE INFORMATION CONTAINED IN THIS DRAWING IS THE SOLE PROPERTY OF Hyper Racing Inc. ANY REPRODUCTION IN PART OR AS A WHOLE WITHOUT THE WRITTEN PERMISSION OF Hyper Racing Inc. IS PROHIBITED.

UNLESS OTHERWISE SPECIFIED:		NAME	DATE	580 GrandView Drive Lewisberry PA, 17339	
DIMENSIONS ARE IN INCHES		DRAWN	Mike D.	12/10	TITLE: <b>HBS Left Front Brake Caliper</b>
TOLERANCES:		CHECKED			
FRACTIONAL ±		ENG APPR.			
ANGULAR: MACH ± BEND ±		MFG APPR.			
TWO PLACE DECIMAL ±		Q.A.			SIZE DWG. NO. REV
THREE PLACE DECIMAL ±		COMMENTS:			<b>B</b> 366-050
INTERPRET GEOMETRIC TOLERANCING PER:					SCALE: 1:1 WEIGHT: SHEET 1 OF 1
MATERIAL					
FINISH					
NEXT ASSY	USED ON				
APPLICATION		DO NOT SCALE DRAWING			

8 7 6 5 4 3 2 1