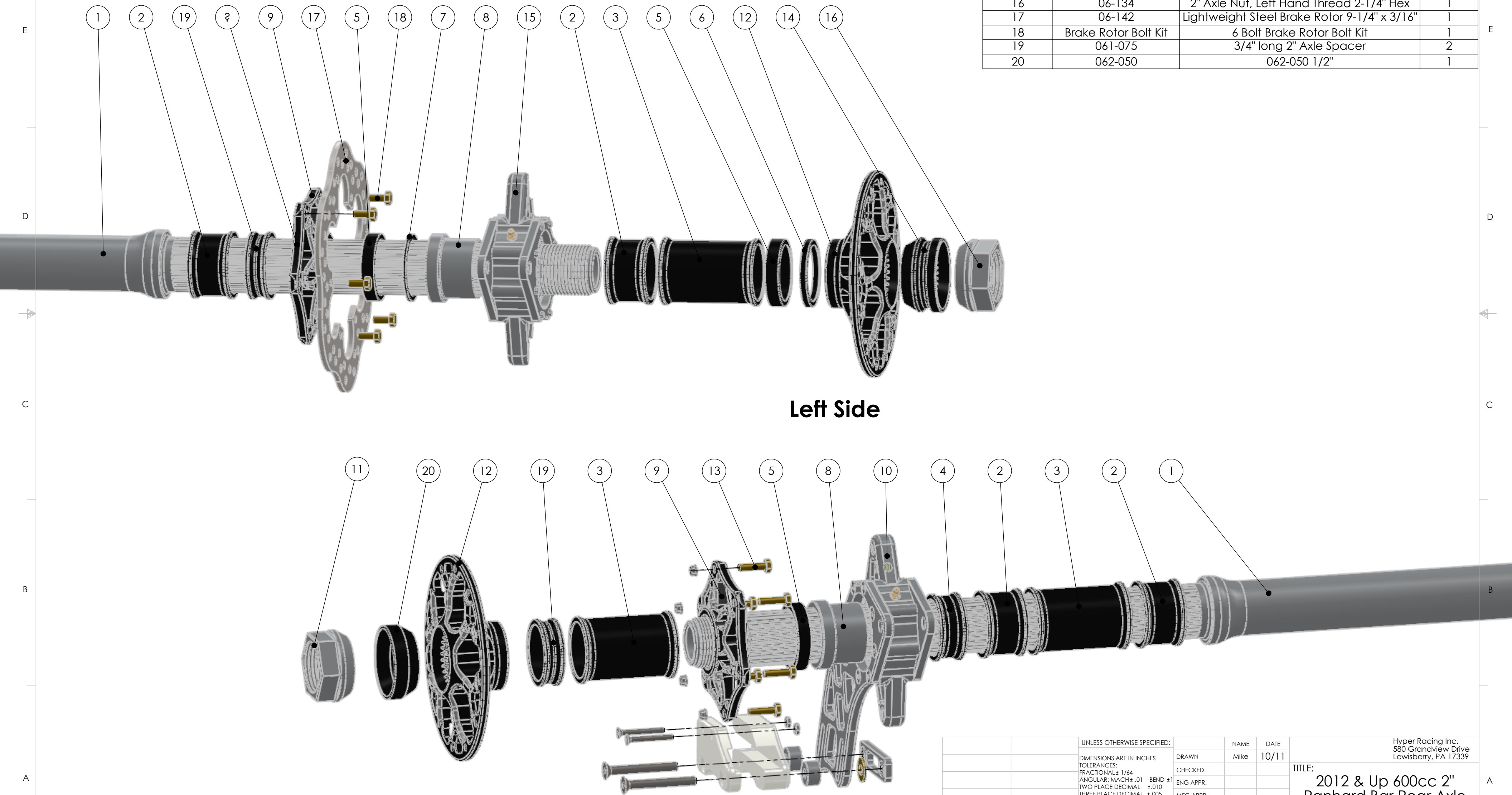


2012 Hyper 600cc, 2" Panhard Bar Rear Axle Assembly Using Offset Left Rear Torsion Arm 40-176

ITEM NO.	PART NUMBER	DESCRIPTION	QTY.
1	06-100	2" x 53" Standard Splined Rear Axle	1
2	061-150	1-1/2" long 2" Axle Spacer	4
3	061-350	3-1/2" long 2" Axle Spacer	3
4	061-100	1" long 2" Axle Spacer	1
5	061-050	1/2" Long 2" Axle Spacer	3
6	061-025	1/4" Long 2" Axle Spacer	1
7	061-0125	1/8" Long 2" Axle Spacer	1
8	06-114	2" Splined Bearing Reducer	2
9	06-300	2" Sprocket Carrier/Brake Hub	2
10	06-1131	2TLC Bearing Carrier with .50" Spacers	1
11	06-132	2" Axle Nut, Right Hand Thread 2-1/4" Hex	1
12	25-605	2" HBS Splined Rear Wheel Center	2
13	08-760	Sprocket Bolt Kit	1
14	062-100	1" x 2" long Outer Axle Spacer	1
15	06-1128	Bearing Carrier 2TR9, Torsion for 9-1/4" Brake Rotor.	1
16	06-134	2" Axle Nut, Left Hand Thread 2-1/4" Hex	1
17	06-142	Lightweight Steel Brake Rotor 9-1/4" x 3/16"	1
18	Brake Rotor Bolt Kit	6 Bolt Brake Rotor Bolt Kit	1
19	061-075	3/4" long 2" Axle Spacer	2
20	062-050	062-050 1/2"	1

Right Side

Left Side



PROPRIETARY AND CONFIDENTIAL
THE INFORMATION CONTAINED IN THIS DRAWING IS THE SOLE PROPERTY OF Hyper Racing Inc. ANY REPRODUCTION IN PART OR AS A WHOLE WITHOUT THE WRITTEN PERMISSION OF Hyper Racing, Inc. IS PROHIBITED.

UNLESS OTHERWISE SPECIFIED:		NAME	DATE	Hyper Racing Inc. 580 Grandview Drive Lewisberry, PA 17339	
DIMENSIONS ARE IN INCHES		DRAWN	Mike		10/11
TOLERANCES:		CHECKED			
FRACTIONAL: ± 1/64		ENG APPR.			
ANGULAR: MACH ± .01		MFG APPR.			
TWO PLACE DECIMAL ± .010		Q.A.			
THREE PLACE DECIMAL ± .005		COMMENTS:			
INTERPRET GEOMETRIC TOLERANCING PER:					
MATERIAL					
FINISH					
NEXT ASSY	USED ON				
APPLICATION	DO NOT SCALE DRAWING				

TITLE:		
2012 & Up 600cc 2" Panhard Bar Rear Axle Assembly		
SIZE	DWG. NO.	REV
C	06-050	
SCALE: 1:12	WEIGHT:	SHEET 1 OF 1